



PEOPLE-CENTERED ACCELERATOR

ADVANCING GENDER EQUALITY, SOCIAL INCLUSION, AND
WOMEN'S EMPOWERMENT IN SUSTAINABLE ENERGY



"We believe that promoting the inclusion of women and the poorest people in society within efforts to achieve universal access to sustainable energy services, and related business opportunities, can help secure a just energy transition that leaves no one behind."

What is the People-Centered Accelerator? The People-Centered Accelerator is a voluntary partnership interested in advancing gender equality, social inclusion and women's empowerment in sustainable energy to enhance and complement ongoing efforts to achieve the Sustainable Development Goals and the Paris Agreement. Partners in the People-Centered Accelerator are working jointly to:

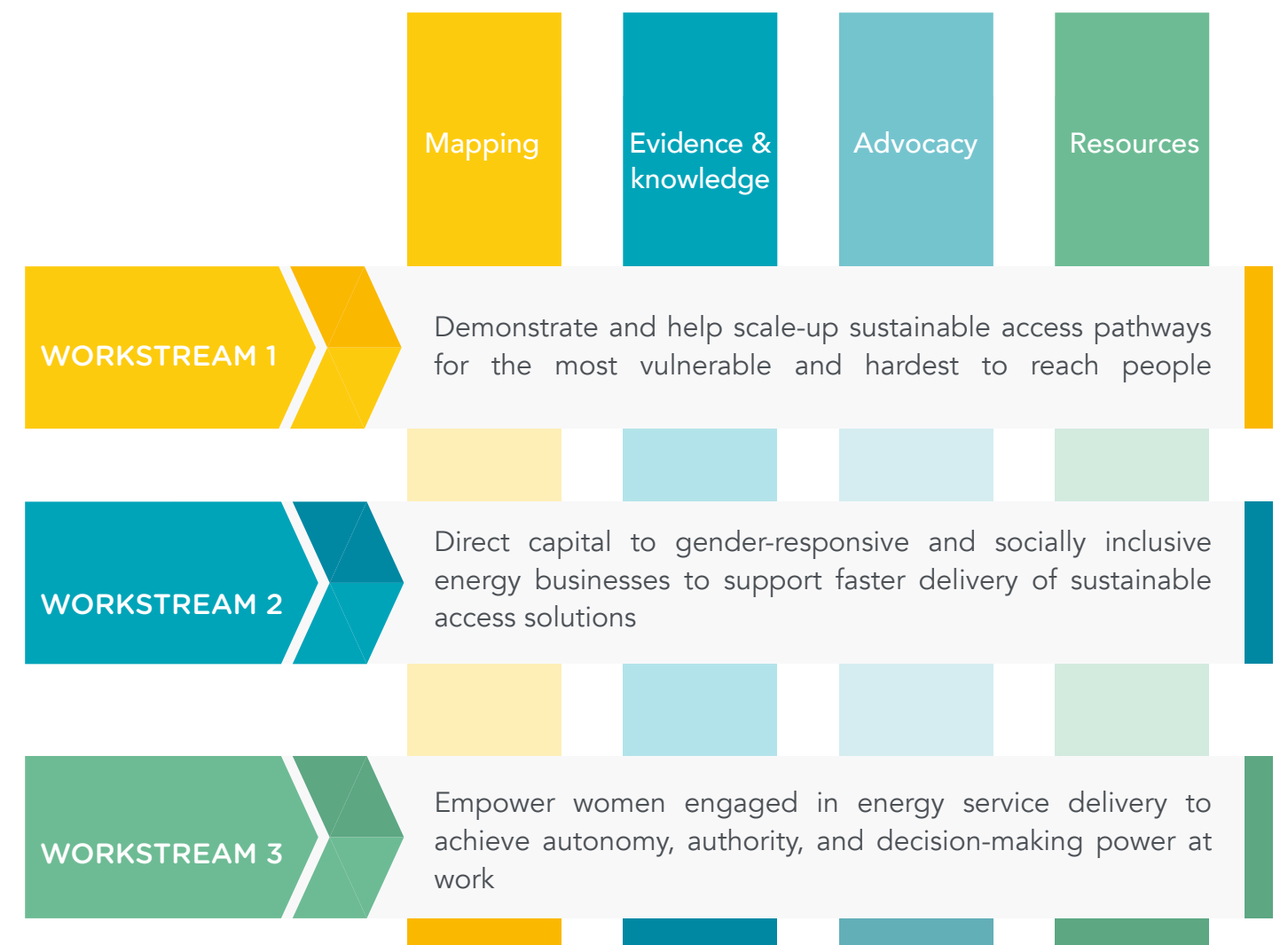
- Enhance and extend the provision of sustainable modern energy to the very poorest people in society, who will not be reached by business-as-usual approaches.
- Incorporate gender equality at the heart of the energy transition by enhancing women's full participation in sustainable energy solutions at every level.
- Help unlock finance from private and public sources for gender equality, social inclusion, and women's empowerment in the energy sector.
- Bring together and strengthen collaboration between a broad range of stakeholders to achieve these aims in the context of the People-Centered Accelerator's work streams and activities.

What can the People-Centered Accelerator do for you? SEforALL is working with partners on an action-oriented work plan to:

- 1. Demonstrate and help scale-up sustainable access pathways for the most vulnerable and hardest-to-reach people.** Business-as-usual solutions are not working to deliver energy access to women and the most vulnerable, particularly those living in urban slums and rural parts of Africa and Asia.
- 2. Help direct capital to gender-responsive and socially inclusive energy businesses to support faster delivery of sustainable access solutions.** Finance needs to flow faster to support gender-responsive and socially inclusive energy access solutions along the entire value chain, but financiers, enterprises and market participants face challenges in jointly developing bankable investments with the right risk profile and the ability to scale quickly.
- 3. Empower women engaged in energy service delivery to achieve autonomy, authority, and decision-making power at work and thereby accelerate progress on international climate change and sustainable energy goals.** There is an opportunity to boost women's engagement in science, technology and mathematics education, and the energy workforce and its management, through strengthened policies that leverage women's knowledge and capabilities as energy leaders and entrepreneurs.



CROSS-CUTTING THEMES





How can you get involved in the People-Centered Accelerator? We would like to hear from stakeholders who are interested in engaging and supporting the People-Centered Accelerator and its mission. Broader, more diverse input will enable more inclusive perspectives and participation in the planning, design and delivery of energy services for all.

For more, visit SEforALL.org/AllEqual or contact Fiona Messent at fiona@seforall.org



IN PARTNERSHIP WITH



This material has been funded by UK aid from the UK government; however, the views expressed do not necessarily reflect the UK government's official policies.